

SERVICE ETHICS IN STARTUP AND EMERGING ENTERPRISES ACROSS INDUSTRIES & IT'S IMPACT ON THE COMPETITIVENESS

Rohit Kanda

Professor of Practice (Finance)

Texila Business School, India

rohit.kanda@iiuedu.in

Harish Handa

University of Dehli, India

harishhanda@gmail.com

Pushpkant Shakdwipee

Professor

Pacific Institute of Management, Udaipur India.

pushpkant1976@gmail.com

ABSTRACT

Tradition that is conformist in fiscal requisites put together especially lofty significance to shaped riches, leading to trade live out to fetch alter in life of countless and make sure the course of prosperity formation. It is notionally advocated that "small startup firms stress on revenue collection" and till now the majority of policy concerning trade philosophy, fine ascendancy and CSR subsist merely paying attention upon huge PLCs. Parallel reading is typically attentive on hefty businesses, with derived data. Since the study is a qualitative explore, devise chosen is eloquent explore inspection. Key Official(s) were interrogated using cited means of information anthology as its domestic allies. clients in contact, close onlooker, administration council, sovereign business assessor etc. by query regarding Ethical Practices in Services (EPS) among overhaul release superiority and overhaul collapse treatment, as exterior allies. Systematic chance trial was worn for, amid an add-on of straightforward chance trial. Utmost trial (50 service sector firms) was as of Intermediary Trade Overhaul, with preceding Money, Commerce and Neighbourhood, Individual plus Shared Overhaul.

Governance and Management Review (GMR)

Vol.4, no.1, 2019

Among Intermediary Trade Overhaul, Commerce, and Transport, Storage and Communication, the majority of entities were detected having belief in EPS. In Building, Community, Personal and Social Services, Money, Indemnity and Rest, majority were having EPS belief. In Property and Leasing, entities were found having a mix kind of view for EPS. Little Morals Sluggishly Rising Establishments were utmost under Money Segment, frequent in numerous tiny establishment Money entities. Magnitude and efficacy of chosen EPS diverge crossways industries amid overhaul segment demarcation. Key goal was to discover the collision of EPS on competitiveness of overhaul startups. The research question was whether it is practicable to be ethical in business in present competitive scenario.

Keywords: Service Ethics, Segmental Overhaul Establishments, Competitiveness.

Ethics in Business and Services

Trade administration academic is penetrating in favor of industry CSR manifestation as idea genesis amid Sixties. CSR in Sixties plus Seventies had been aggravated from communal thought, leaving monetary motives. Morals Policy is habitually not hold for education amid moral do of workers and makes unobvious if secret exposure appearance worn efficiently plus comprise lots of incidents, with missing elder boss evidently elected on morals matters. Preceding era; as finicky, pragmatic investigate bring proof for quantifiable induce in CSR idea for corporation plus its allies. Moral policy amid South Asian background is hardly a question in great inquiry. Civilization being traditional of financial conditions fasten an extremely elevated worth to shaped riches, in revolve, leading to trade live out carry adjust in life of lots of and ensure the course of riches making. The majority of the fine **recognized firm** have a fine printed moral policy of demeanor and they sternly chase it. These firm are sequentially growing their input in the CSR behavior. **Petite established firm strain on income gathering.** Till here the majority of the rules about trade philosophy, fine ascendancy and business communal liability regulated lone on hefty corporations. This fetch up a hole amid the moral set-up of land. Hence, additional experimental and hypothetical investigate is desirable in this orb, to stiff up the precise modular connection amid the community ethnicity and trade morals, in perspective of the unexploited slice. The entire here divulge that trade dwelling get drawn in bad trade live out to amplify their income or to advance their potential in sell. Such observe happen all over the globe. This urge a call for re-research. Forthcoming towards our edge faction, Service Sector in India, newest plus best ever mounting segment of country, contain the chief carve up in the configuration and expansion of the nation, is the prime device of escalation and progress of the country. This part in latest times of yore, especially in India, has been indict of its overhaul breakdown and ineptitude, arise out of reckless actions / discourse of administration or expert at diverse rank. Now this investigate, with spotlight on rising and establishing overhaul business, premeditate moral standing amid the live out plus want as well as prospect for revitalization at hand (as proposed by Kanda, 2017). Talking on the modern text in Indian background, Mulla (2003 Page 1) examine: "Efficacy of corporate initiatives in the ethical regard in Indian Environment remains to be seen" and call out: "Employees' personal initiative and dynamic leadership for a sustainable

Service Ethics in startup and emerging enterprises across industries & its impact on the competitiveness

moral ethical character will work for". Seshadri et al. (2007 Page 61) spread out: "Business ethics are also about creating an ethically sound working environment within organization and about modeling ethical behavior by leadership. It makes good long term business sense to be ethical". Jalil et al. (2010 Page 1) construe as "Ethics and ethical behavior are issues which are increasingly being focused". Apiece reading, "Organizations are crossing red zone of ethics and ethical behaviors" and concede as "Organizations are constantly surveying and evaluating the unethical practice in business organizations worldwide". Study commend as "It is very essential to have a code of business ethics in every business organization and having the code implemented in the organization in objective and effective way". Mishra - Sharma (2010 Page 79) infers "Effective CSR Policy within specific industries and companies is becoming increasingly accepted, but its implementation varies all across". Smart et al. (2010 Page 1) outlooks "Corporate communications and reporting on sustainability need to do more than just pay lip service to the green agenda" plus "Ethics must be embedded in business models, organizational strategy and decision making processes". They argue that "Governance structures should include people with appropriate skills to scrutinize performance and strategy across social, ethical and environmental issues". Labbai (2013 Page 17) strains "Companies must adopt and disseminate a written Code of Ethics, build a company tradition of ethical behavior, and hold its people fully responsible for observing ethical and legal guidelines" and advocates "Companies able to innovate new solutions and values in a socially responsible way, are most likely to succeed". Husssaini (2014 Page 2) explore crest native Information Technology groups and accentuate of "a strong need to formally address the ethical issues with all seriousness". Study squabble "Ethical and Compliance Policies are not in place in Indian IT Firms and there is a strong need to improve up to reach upto global standards, if they wish to succeed in global market over a long term" and suggest "a standard for measuring and reporting ethical behavior in business should be adopted to validate the claims of it being ethical". Mishra et al. (2014 Page 18) strain "Most of the well established firms have a well written ethical code of conduct and they strictly follow it". Apiece the study, "These firms are successively increasing their participation in the CSR activities" and remark of tiny entities that "Small startup firms stress on revenue collection". Research established that "ethical practices in business help to create favorable relationships with other organizations and establish long-term positive relationships with existing and potential future customers", therefore "Grow and Sustain in Long Run" (Kanda - Handa, 2018a, b).

Study space plus significance

Hypothetical appraisal bring into being merely a "least or negligible research on the phenomenon with regard to Indian service sector firms in a rigorous manner". Simply a little intelligence / credentials are established. Moral breakdown is considerably pragmatic amid overhaul industry. Tranquil, segments are mainly rising part in country. It is notionally advocated: "small startup firms stress on revenue collection". Additionally, available reading frequently pay attention to outsized firm, worked only published data. On hand reading has endeavor to swathe the similar explore space with diverse information pertinent to the focus. The dilemma is of considerable significance on explanation of the business ascendancy

Governance and Management Review (GMR)

Vol.4, no.1, 2019

practice decide on by Indian firm as a element of universal market as sound as not as such noteworthy effort being completed on the above held experience. This reading is a momentous learn, as it tend to offer a apparent depiction of the combined set-up of Indian trade in this background and craft a of use input towards the incident (Kanda, 2017).

Research Question

Cut through competition is rising day by day to a nasty extent. The question if the hour is whether it is truly practical to go ethical in business in such a scenario. The same is the question among the small business houses in the emerging Chindian region.

Key goals of the research were

To spot the moral business practices pursued by native overhaul establishing businesses;
To discover the collision of EPSs on the competitiveness of services establishing and rising venture in India; and
To unearth whether extent and use of pick moral trade practice vary athwart industry and the ensuing collision on the competitiveness of services establishing and rising projects.

Research span

This investigate concerning the survival and possibility of fair demeanor in the current cutthroat trade atmosphere is primed for the interlude opening as of the day of scheme commencement in 2012 to the plan ending in 2017. So this reading present an impression about the Indian trade carry out in overhaul segment for this epoch and other related specifics and statistics. not together since that it too offer us a succinct sight of the worldwide drift and the state of affairs of the Indian market in the current aggressive set-up (Kanda, 2017).

Investigation Blueprint

Being a Qualitative investigate, blueprint pick for this study is evocative study, where assessment is the chief way of facts anthology. For the reason of major records assortment, controlled information anthology worn mainstream from restricted substitute query devise for survey. Rationalizing interrogation, chiefly individual discussion amid a complement of Telephonic and Electronic interrogate method of interview was worn, depending on the contact and accessibility of trial. In some cases, surveillance was as well worn as a added basis of information assortment when pertinent. A funnel examination on 10 per cent of the trial, i.e., 20 businesses, was commenced in beginning to bridle away the irregularity present, which follow a central investigate assessment, following alteration, in the particular segments. Technique for the information compilation from the above sources incorporated trial survey, scrutiny, authority judgment and inferior statistics scrutiny as apt with a mock-up mass of 0.51 % (entire India trial of 203 from whole 39,971 entities in overhaul segment in India), attuned base on ample segmental plus expanse depiction (Kanda - Handa, 2018a, b).

Quantification with level

Apiece first goal, base ahead steer assessment in 20 ventures of NCT Delhi, EPSs areas in practice have been recognized for extent allocation (calculated on Ten tip level - all encompass of 10 Variables), casing client and community affairs, origin and revelation, community liability and ascendancy, class, entity residency, collapse treatment and criticism temperament. Based the prior trade reading and trial of business recital, Competitiveness is calculated for most recent five years (2011-2016), equally assembly OCFY for every year,

57

Service Ethics in startup and emerging enterprises across industries & its impact on the competitiveness

considered on a tip range, with a gaze on company figure and communal being; recital and competence; spirits and company residency; proceeds and outlay; and pledge and value. For hefty business, if in use in any case, trial has been in use added than one time, allowing for local disparity. For quizzical all over the diverse slice of study, feedback form ranking range such as class range, summated ranking likert range, and graphical ranking range have been worn for the point. Dichotomous quizzical is as well worn for a few of the vital incepting query such as to pose with reference to the survival of moral prevailing arrangement in the business (Kanda - Handa, 2018a, b).

Data resources

in favor of put in order development account diverse sort of data is unruffled from dissimilar foundation. The chief resource of this reading integrated key marketplace assessment, a mixture of convene, talk and colloquium with the diverse economists, forecaster, business talking head (relevant and accessible) of individual turf as well as broad revile of people at hefty. The core inferior supply for this assignment were facts and other details composed of internet, periodicals, and information and figures of a range of associations which take in yearly information, unusual information, appraisal and details of scrutiny etc.

Trial procedure

Stratified chance trial have been worn for the point of mock-up, with a add-on of plain chance trial. Hypercritical and/or expediency trial have been worn in special cases.

Trial norm

For the idea of trial taking, company / other registered business in overhaul segment, with operational extent within Indian territory got measured per se masses. Comportment of the secrecy passage, being an insightful reading, personage individuality is not make known in this.

Respondents

Employees(s) / officer(s) of the above businesses, as apiece the set data, have been interrogated by the stated means of information anthology.

Trial mass

For the idea of principal records anthology, a trial mass of 203 overhaul concerns¹ across country was in use for reflection. There was a layered examination. Representatives of the business were interrogated by the stated style of records anthology, as its inner stakeholders. They were inquired on the EPS survival amid commercial globe plus the business activity, EPS particulars go for in entity for overhaul release, plus collision of those EPS in entity along with trade expansion. clientele over contact, close to spectator, regime spoke person, sovereign business assessor, autonomous investigate association, study crowd, CSR / business ascendancy association, etc. with query about EPS in overhaul release superiority and overhaul collapse treatment, for exterior allies.

Study Particulars, esteeming sample roofed:

Action Scope / locale	Concerns Numeral (in '000)	Trial
Intermediary Trade Overhaul (ITO)	9.7	50
Neighbourhood, Individual plus Shared Overhaul (NISO)	3	15

Building	5.3	25
Money	8.3	40
Indemnity	0.1	5
Logistics plus Relay (LR)	1.5	5
Property plus Leasing (PL)	3.9	20
Commerce	6.2	30
Rest	2	13
Sum	40	203

* Basis of Adaptation: Corporate Affairs Ministry, India (2015). 2014-15 Annual Report.

Figures worn (entire India)

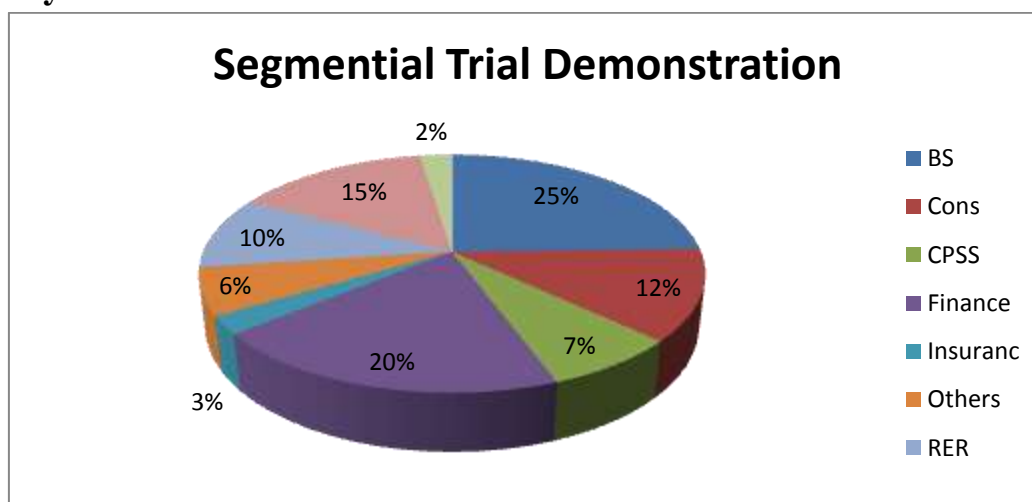
NIIR - All India Companies Directory [Sixth Ed.], furnishing on prime officer(s) plus extra required minutiae was worn up pro rationale of data to allocate mock-up over state populace. Local Yellow page and particular trade alliance database have too referred for the reason. In addition, other important data have been worn to complement it.

Information anthology method(s)

For the point of crucial statistics compilation, statistics have been unruffled through individual dialogue anywhere preferred as fine as in the achieve of investigator, complement by syndicate agency / postal feedback form / electronic conference / feedback form.

¹ Populace, at this time for the idea of this investigate consisted of company / additional registered business in overhaul segment, with maneuver extent in India amid individual action. As known from accessible study corpse, "Most of the well established firms have a well written ethical code of conduct and they strictly follow it" plus "Small startup firms stress on revenue collection", with better likelihood in receiving cosset of wrong practice (Mishra et al., 2014), thus for array for craft investigation delegate, populace hub put expressly for establish plus rising trade concern. Segmental allocation plus industrialized section along with measured as shaping extent plus trial share, base in carve up from apiece segment / area amid whole asset plus giving in per capita increase.

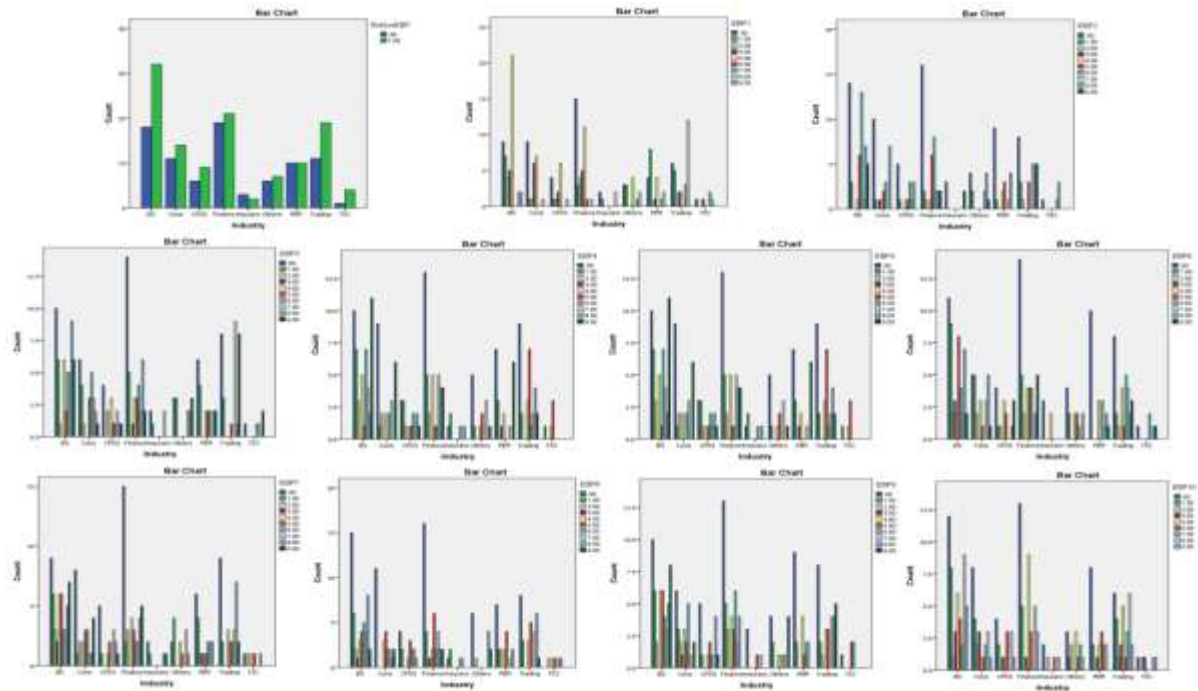
Scrutiny and Elucidation



Explanation: Utmost trial is from ITO, preceded by Money, Commerce and NISO etc.

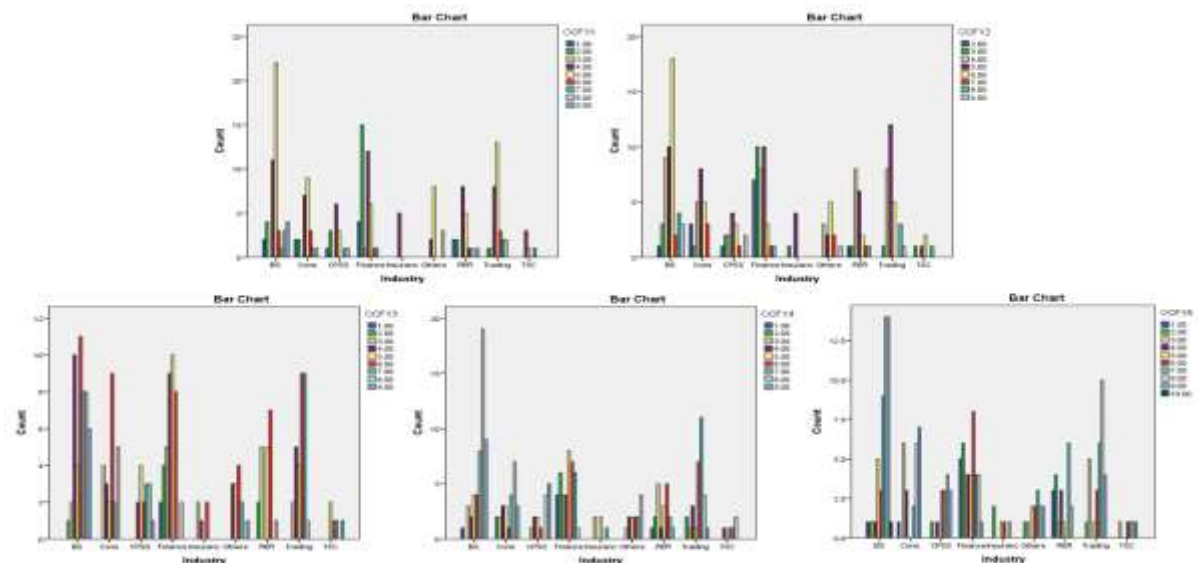
Trust in EPS and state of affairs of EPSs

Service Ethics in startup and emerging enterprises across industries & it's impact on the competitiveness



Explanation: ITO, Commerce, LR, observed most of the belief in EPS. Building, NISO, Money, Indemnity, Rest, observed more belief in EPS. PL observed a mixed response set on belief in EPS.

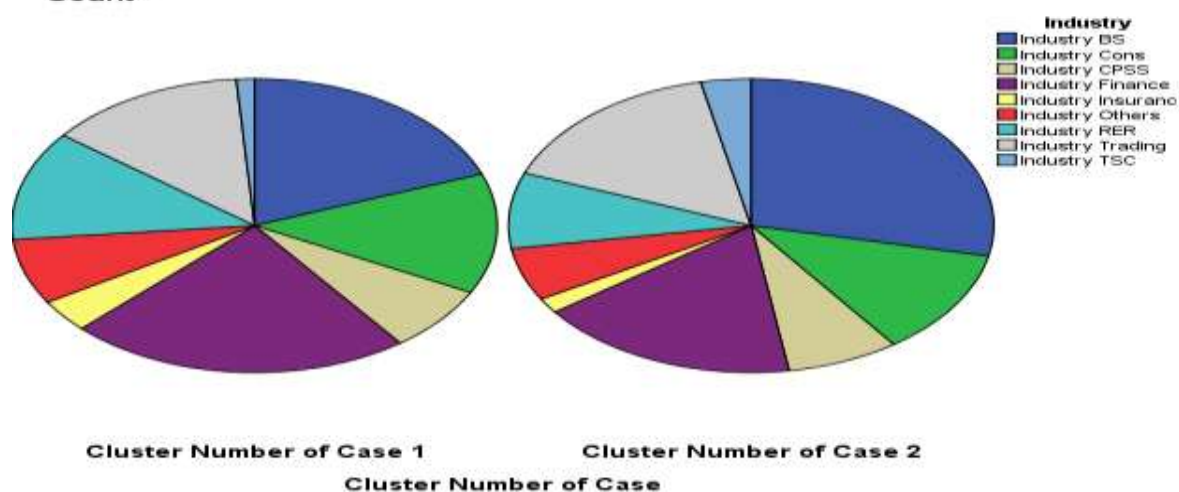
Competitiveness across fiscal year 1 - 5



Cluster scrutiny (business depiction)

base on the reading outcome, the trial firms have been allocated amid 2 cluster, namely, 'Little Morals Sluggishly Rising Establishments' (Group One) plus 'Greatly Moral Swift Rising Establishments' (Group Two). Little Morals Sluggishly Rising Establishments found highest for Money segment, a frequent scenery for several petite establish Money firm, with preceding ITO, Building/Commerce, PL, NISO/Rest, Indemnity, LR segments. While, Greatly Moral Swift Rising Establishments are utmost in case of ITO, survived by Money, Commerce, Building, PL, NISO, Rest, LR, Indemnity segments.

Industry * Cluster Number of Case Crosstabulation Count



Segment shrewd arc inference scrutiny

	Faction from Little Morals Sluggishly Rising to Greatly Moral Swift Rising Establishments						
Field / OC	FY1	FY2	FY3	FY4	FY5	In General	Tendency
ITO	5 - 5	5 - 5<6	5 - 6<7	5<6 - 8	6 - 8	Rise (1D)	I I I I
Cons	4 - 4<5	5>4 - 5	5>4 - 6<7	5 - 7	5>4 - 7<8	Rise	I I I I
NISO	4>3 - 4<5	5>4 - 6	5 - 7<8	5 - 8<9	6>5 - 8	Rise	I I I I
Money	3 - 3<4	4>3 - 4<5	4>3 - 5<6	3>2 - 6	3>2 - 6<7	Rise	I I I I
Indemnity	-	5 - 4	4 - 5	4>3 - 6	3 - 7	Rise (1- 1D)	D I I I
Rest	6>5 - 5<6	6>5 - 5<6	6>5 - 6	5 - 7	5 - 7<8	Rise	I I I I
PL	4>3 - 5	5>4 - 5	4>3 - 5<6	3 - 6	2 - 7	Rise	I I I I
Commerce	5 - 5	6>5 - 5<6	5 - 6	5 - 7	5>4 - 7<8	Rise (1D)	D I I I
LR	4 - 5	6 - 5<6	5 - 6<7	4 - 7<8	3 - 7<8	Rise (1D)	D I I I

Explanation: ITO have experienced through augment. Building have experienced right through enlarge. NISO have experienced through enhance. Money have experienced through turn down. Indemnity have experienced an original refuse, after that right through boost. Rest has experienced a through raise. PL has experienced a right through augment. Commerce has experienced an original turn down afterward right through boost. LR has experienced a original turn down, Then right through enlarge.

Summing Up

Indian Ethical Philanthropy in Governance is not substantially evolved and governed by law. Service segment in India, the most dynamic and best ever emerging, amounting prime curve up in the makeup and expansion of nation, many times, is accuse of overhaul collapse and ineffectiveness, due to negligent actions and exposition of managing professionals. The study

Service Ethics in startup and emerging enterprises across industries & its impact on the competitiveness

explore the spheres of darkness using diverse data sets, statistics and sources of evidence. The work gives a clear representation of the combined state of affairs of Indian trade in this milieu and formulate a practical giving towards the incident (Kanda, 2017). Intermediary Trade Overhaul (24.6 per cent) had a maximum trial, precedent by Money (19.7 per cent), Commerce (14.8 per cent) and NISO (12.3 per cent) etc. ITO, Commerce, and LR segments were found mostly to believe in EPS. Building, NISO, Money, Indemnity and other service industries were found more to believe in EPS. PL Firms had a mixed opinion set on belief in EPS. Trial was clustered amid 'Little Morals Sluggishly Rising Establishments' and 'Greatly Moral Swift Rising Establishments'. Little Morals Sluggishly Rising Establishments are utmost in Money segment, a regular remark in petite setup Money entities, with preceding ITO, Building/Commerce, PL, NISO/Rest, Indemnity, LR segments. While, Greatly Moral Swift Rising Establishments found highest amid ITO, with preceding Money, Commerce, Building, PL, NISO, Rest, LR, Indemnity segments. Apiece outcome view, scope plus value in chosen EPSs vary athwart based on Industry demarcation and the ensuing collision on the Competitiveness vary so, subject to business tactical spot and organization (Campbell - Malan, 2002; Mishra - Sharma, 2010; Tonello, 2011; Husssaini, 2014; Patel - Schaefer, 2014; Kanda - Handa, 2018a, b). Text cited a slighter investigate on the incident chiefly in the Indian environment. Contrasting Mishra et al. (2014 Page 18) greater part of firms were observed in EPS and it is finely held by the outcome that fair practice in dealing aid to produce constructive associations with additional business(s) and set up lasting optimistic contact with on hand and probable outlook clientele, plus for this reason "Grow and Sustain in Long Run" (Kanda - Handa, 2018a, b). Mulla (2003 Page 1) quotes that in Indian context, "Employees' personal initiative and dynamic leadership for a sustainable moral ethical character will work for". Seshadri - Raghawan - Hedge (2007 Page 61) spread out that "It makes good long term business sense to be ethical" that is well supported by study results. Jalil - Azam - Rahman (2010 Page 1) construe as "Organizations are crossing red zone of ethics and ethical behaviors" and as per the study results some organisations were found actually doing so. Mishra - Sharma (2010 Page 79) construe that "Effective CSR Policy within specific industries and companies is becoming increasingly accepted, but its implementation varies all across" and same is again recognized by the study. Husssaini (2014 Page 2) found "Ethical and Compliance Policies are not in place in Indian IT Firms and there is a strong need to improve up to reach upto global standards, if they wish to succeed in global market over a long term". She recommends that "a standard for measuring and reporting ethical behavior in business should be adopted to validate the claims of it being ethical". For a majority of results the above stand rejected, but being ethical is found highly associated with the firm growth. The key goal was to come across the collision of moral trade practices on the competitiveness of service segment startups. The research question was whether it is practicable to be ethical in business in present competitive scenario. Both of these are duly addressed in the study. There is a positivistic impact of EPS on firm competitiveness and it is duly practicable to go ethical in business in present run competition.

References

- [1] Hussaini, N. (2014). *Corporate Ethics of Top IT Companies in India*, pp. 2-21: TMBU
- [2] Bihar, India.
- [3] Jalil, M.A. - Azam, F. - Rahman, M.K. (2010). Implementation Mechanism of Ethics in Business Organizations. *International Business Research*, Oct., pp. 1-11.
- [4] Kanda, R. (2017). Impact of Ethical Practices in Services on Organisational Competitiveness: A Study on Service Sector in India (Ph.D. Synopsis). *The IUJ Journal of Management: A Bi-Annual Journal of The ICFAI University, Jharkhand*, 5(1), pp. 75-84.
- [5] Kanda, R. - Handa, H. (2018). Key Extracts from the Thesis Dissertation on Impact of Ethical Practices in Services on Organizational Competitiveness - A Study on Service Sector in India, *The Southeast Asia Review of Economics and Business (SAREB)*, June, pp. 377 – 386. Texas, U.S.A. / Vietnam: University of Houston / Can Tho University
- [6] Kanda, R. - Handa, H. (2018). Impact of Ethical Practices in Services on Organizational Competitiveness - A Study on Service Sector in India. *International Journal of Business Ethics in Developing Economies (IJBEDE)*, June. New Delhi: India Research.
- [7] Labbai, M.M. (2013). Social Responsibility and Ethics in Marketing. *International Marketing Conference on Marketing & Society*, 8-10 April, pp. 17-27: IIMK Kerala, India.
- [8] Mishra, A.K. - Dalvi, B.B. - Sahni, S. - Verma, V. (2014). *Ethical Considerations in Business Decision Making in Indian Companies*, pp. 18: IITB Maharashtra, India.
- [9] Mishra, N. - Sharma, G. (2010). Ethical Organization and Employees. *Asian Journal of Management Research*, pp. 79.
- [10] Mulla, Z. (2003). Corporates in India Cannot Afford to be Ethical. *Management and Labour Studies*, February, pp. 1-7.
- [11] Seshadri, D.V.R. - Raghavan, A. - Hedge, S. (2007). Business Ethics: The Next Frontier for Globalizing Indian Companies. *Vikalpa*, 32(3), pp. 61.
- [12] Smart, V. - Barman, T. - Gunasekera, N. (2010). Incorporating ethics into strategy: developing sustainable business models. *CIMA Discussion Paper*, Oct., pp. 1-15.